

## Analysis grey and black polypropylene regranulate

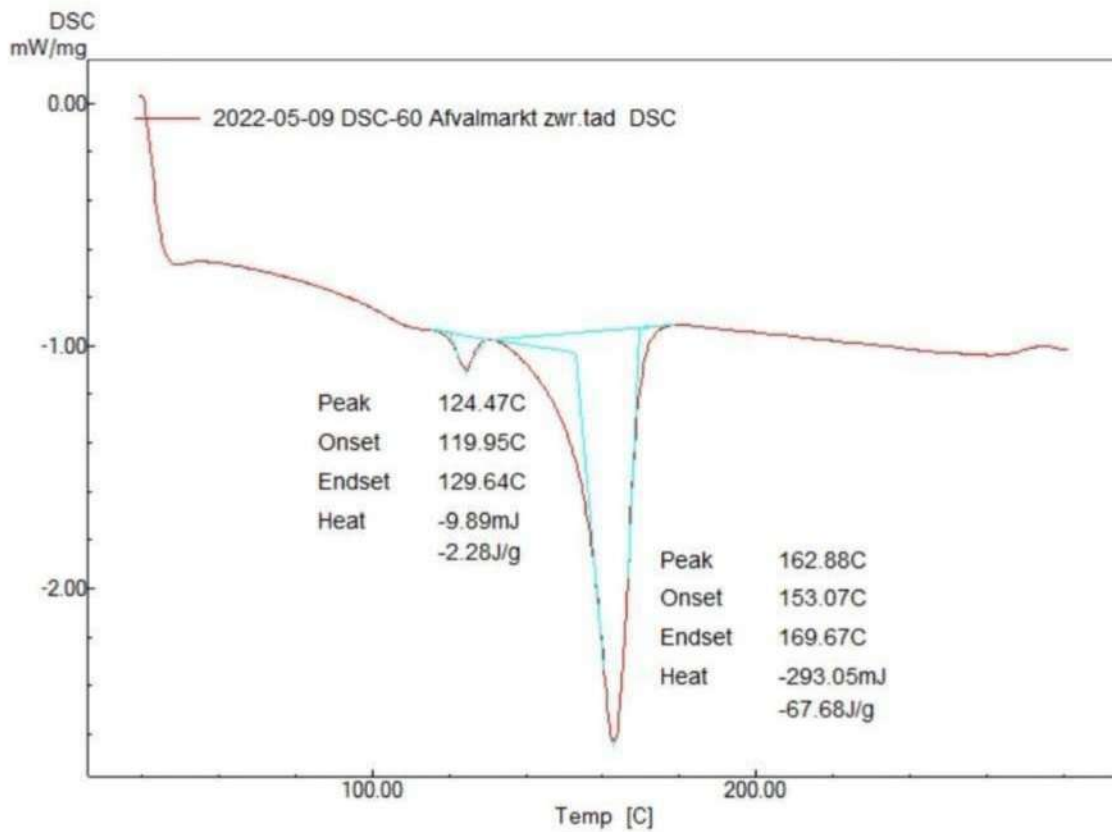
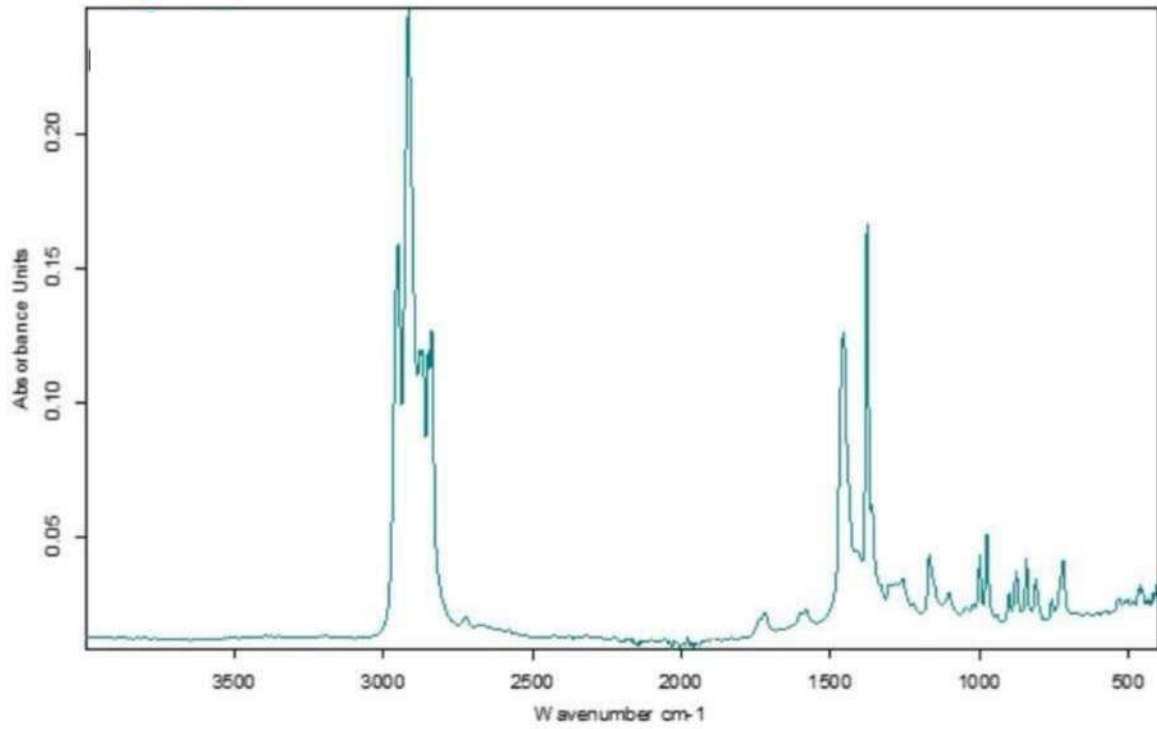
### Grey regranulate

FTIR	Result: Polypropylene	
MFI (230°C, 2,16kg)	14,4 g/10min - smooth extrudate, regular flow	
Density (g/cm <sup>3</sup> )	0,950	
Pyrolyse	5,6% Ash	
DSC	126°C:	PE circa 2%
	163°C:	PP

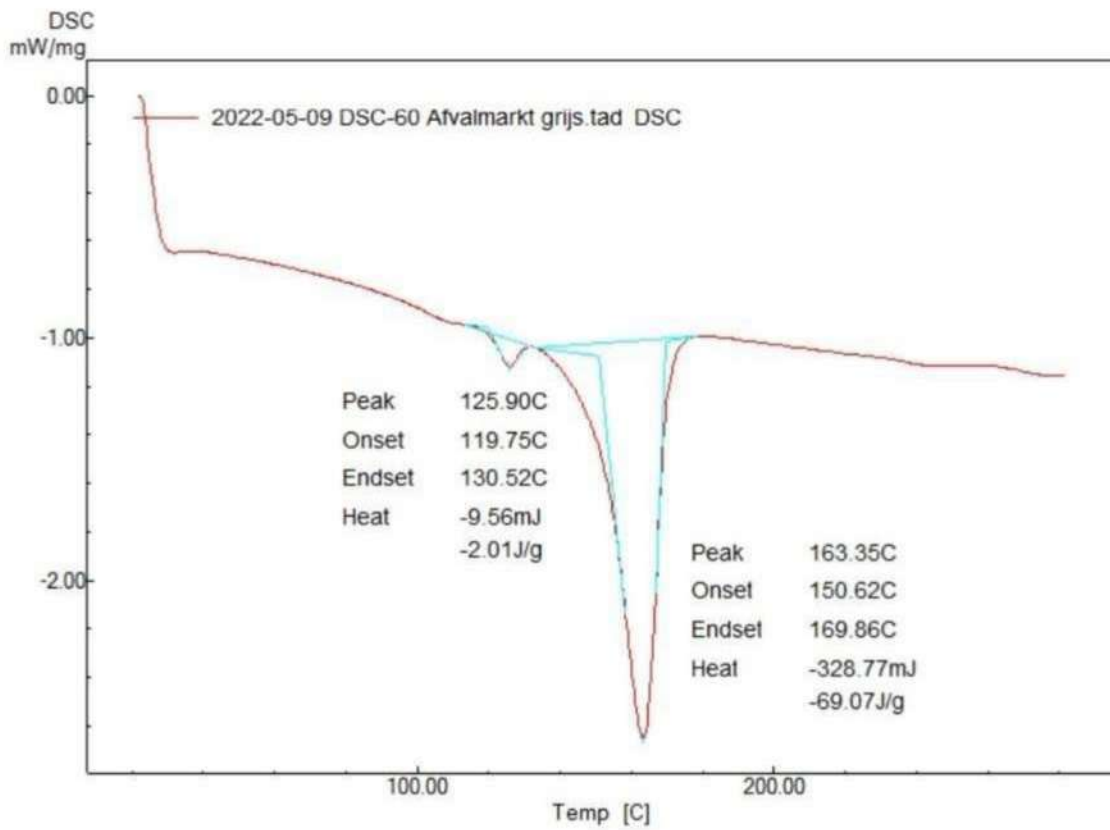
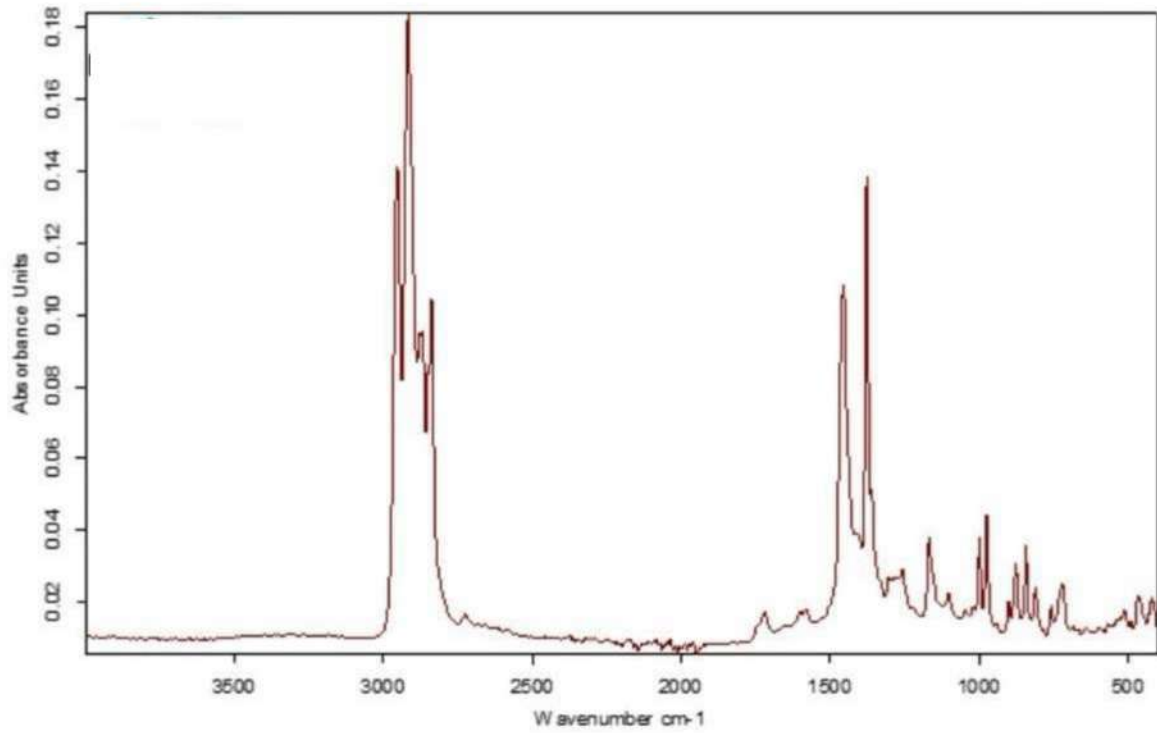
### Black regranulate

FTIR	Result: Polypropylene	
MFI (230°C, 2,16kg)	11,2 g/10min - smooth extrudate, regular flow	
Density (g/cm <sup>3</sup> )	0,938	
Pyrolyse	4,3% Ash	
DSC	124°C:	PE circa 2%
	163°C:	PP

Attachments: FTIR and DSC analyses



FTIR and DSC analysis black regranulate



FTIR and DSC analys grey regranulate