

NovantiQ d.o.o.

Zinke Kunc 19, 40000 Čakovec, Croatia
OIB: 35582391130
VAT ID: HR35582391130
email: info@novantiq.hr
<tel:+385/95-901-0794>



CATALOGUE

OFF - SPEC HDPE BLOW MOULDING GRANULATE

Manufactured by processing used HDPE packagings from private households provided by sorting centers. These sorting centers are sorting packaging waste from household collection schemes. There are no post-industrial or pre-consumer Bottles/Flakes intentionally added to our feedstock during our own production. Origin of the feedstock is the EU.

| | |
|--------------------|---|
| <i>Status</i> | pilot volumes available |
| <i>Application</i> | packaging for consumer goods: bottles, small canisters, not intended for food contact |
| <i>Processing</i> | extrusion blow moulding |

| Physical properties | Typical Values Units | Test method |
|--|-----------------------------|--------------------|
| <i>Melt flow rate (190°C / 2,16kg)</i> | 0,24 g/10min | ISO 1133 |
| <i>Tensile Strength</i> | 25 MPa | ISO 527-2 type 1A |
| <i>Tensile Modulus</i> | 950 MPa | ISO 527-2 type 1A |
| <i>Tensile Strain at Yield</i> | 10 % | ISO 527-2 type 1A |
| <i>Impact Strength, Charpy notched +23°C</i> | 20 kJ/m ² | ISO 179-1 1eA |
| <i>Density</i> | 0,96 g/ml | ISO 1183-1A |
| <i>Ash content</i> | <2 % wt | ISO 3451 -1A |
| <i>Bulk Density</i> | 0,57 g/ml | |

Composition

| | | |
|--|----------|-----------------|
| <i>PP content</i> | < 1 % wt | ISO 11357 |
| <i>Limonene content</i> | < 3 ppm | internal method |
| <i>Heavy metals (Pb, Hg, Cd, Cr(VI))</i> | < 10 ppm | ISO 17294-2 |

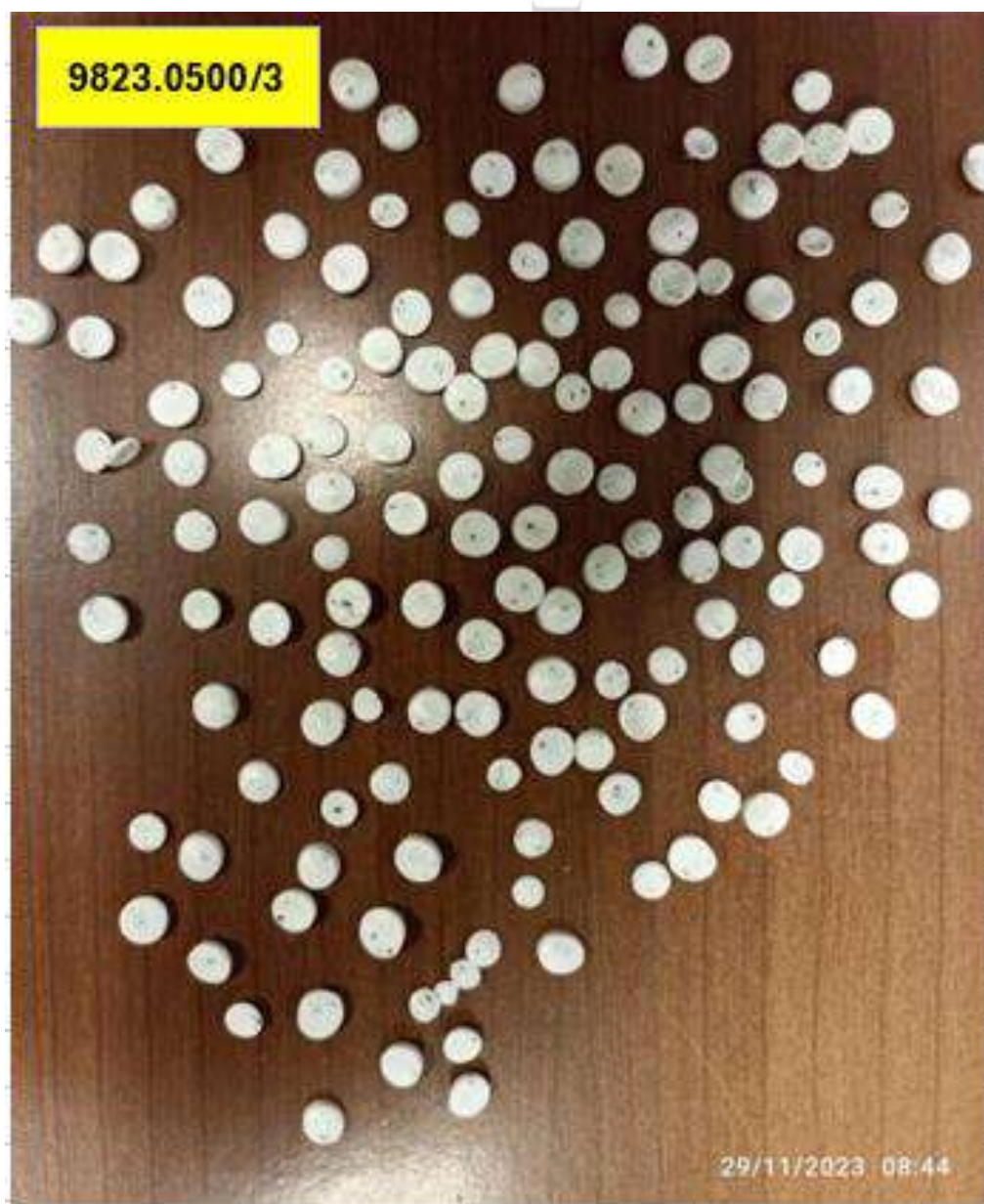
1. Lot 9823.0380/1, lot of blue contaminated with grey / 25,000 kg



2. Lot 9823.0394/1, batch of blue contaminated with black / 25,000 kg



3. Lot 9823.0500/3, white lot with many black spots / 25,000 kg



4. Lot 9823.0511/3, white lot with some black pellets / 25,000 kg



5. Lot 9823.0543/3, white lot with blue and grey pellets / 7,500 kg



6.- Lot 9823.0544/1, white lot with blue tint and black dots / 1,250 kg



7.- Lot 9824.0070/1 – white lot contaminated with grey / 25,000 kg



8.- Lot 9824.0166/3 – white lot with bluish granules and black spots / 25,000 kg



9.- Lot 9824.0167/3, white lot with many black spots / 25,000 kg



10.- Lot 9824.0136/1, white lot has black particles / 17,500 kg



11.- Lot 9822.0455/1, white lot with dirty pellets and black spots / 11,250 kg



12.- Lot 9824.0127/1, white lot, high MFI at 0.56 / 11,250 kg

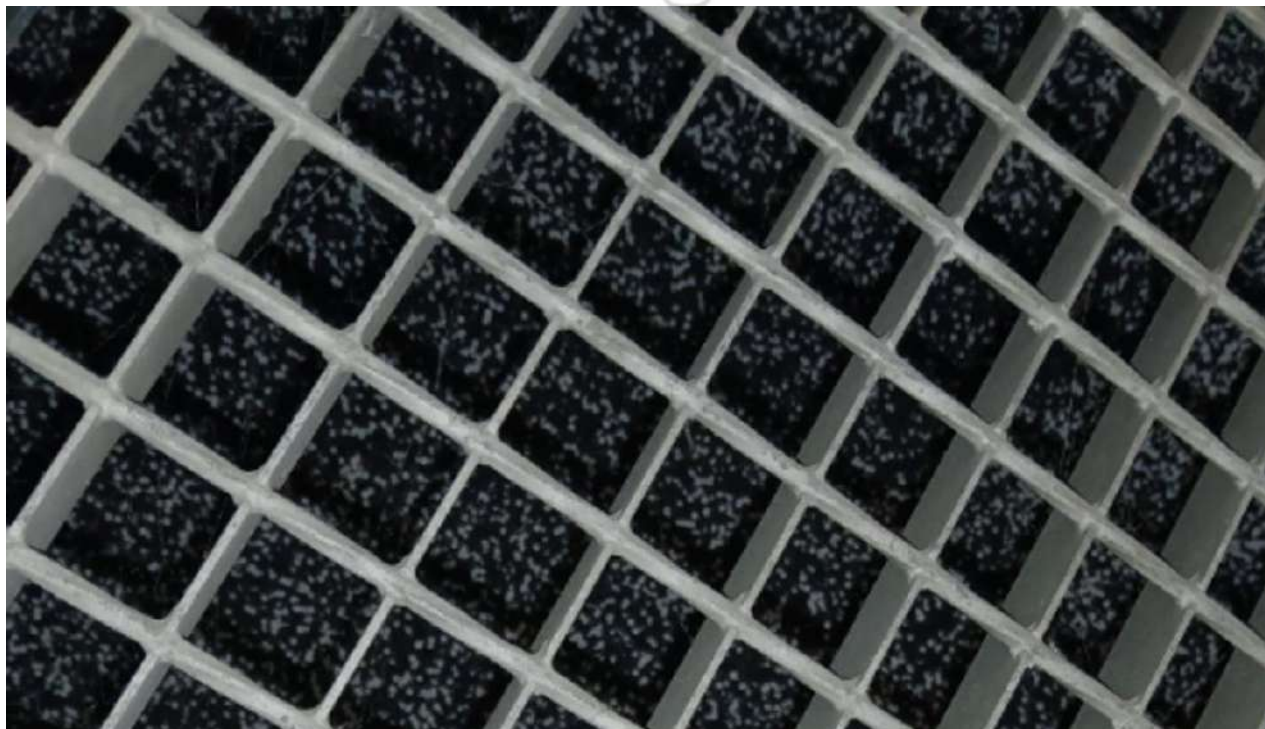
13. – Lot 9824.0090/1, white lot with a lot of black dirt (which is removed) the vast majority are not black spots. / 25,000 kg



14. Lot 9824.0039/1, lot of black spots



15. Black HDPE mixed with white HDPE – 25,000kg



16. White batch with some light grey granules – 25,000kg

